

Applying for a school place for September 2023 at

# Secondary School



Application deadline **31 October 2022**

**Haringey**  
LONDON

# Foreword

## Dear Parents and Carers

As a council we are working to give every child in Haringey the best possible start in life: having an excellent education is part of that. Our secondary schools have a lot to be proud of and constantly strive to deliver positive outcomes for every pupil. I know that every school is committed to providing the very best for its students.

Our schools have tremendous facilities, exceptional teaching and dedicated staff - and you can be confident that, wherever your child goes to school in Haringey, they will enjoy an exceptionally high standard of education. We understand that making the move to secondary school is a very important time for your child and for you. The information in this online booklet should help you to carefully consider your options, so you make an informed decision in selecting the right preferences for you and your child.

Each of our secondary schools will hold an open event, and we strongly encourage you to attend these to help you get to know your local school and in making your choices. Details of these open events can be found on our website at [www.haringey.gov.uk/open-events](http://www.haringey.gov.uk/open-events). We ask that you keep up to date with the latest information on open events by also visiting the individual school websites nearer the time as it is possible that some events may be subject to change.

It is important to remember that expressing a preference is not the same as choosing which school your child will attend – Haringey's secondary schools are very popular, and many receive more applications than there are places available in Year 7. The admissions criteria set out in this booklet explain how decisions on offers of places will be reached.

Once you have read this booklet, visited the schools, and also read their prospectuses (which are available on individual school websites at [www.haringey.gov.uk/secondary-schools](http://www.haringey.gov.uk/secondary-schools)), please apply online at [www.eadmissions.org.uk](http://www.eadmissions.org.uk). We encourage every parent and carer to make their application online where they can.

You can make your application using a computer, smartphone, or tablet. If you don't have access to any of these devices or the internet, you can request a paper application using the information set out in this booklet.

Please note, you can use a computer and access the internet for free at any one of Haringey's nine **LIBRARIES**. Please visit Haringey libraries for opening times and more information about libraries.

The deadline for submitting applications is 31 October 2022. Please make sure you apply on-time. If your application is received after this date, it is very unlikely that your child will be offered one of your preferences.

We look forward to receiving your application and wish your child every success at secondary school and beyond.

**Cllr Zena Brabazon**  
**Cabinet Member for Children,  
Schools and Families**

**Eveleen Riordan**  
**Assistant Director for  
Schools and Learning**

Home

Applying  
for a school place

Haringey schools

Sixth Form

Additional  
information

Apply now  
eAdmissions

# Contents

## Applying for a school place

- Admissions 2023
- Deciding on a school
- Myth busters
- Applying online
- Fraudulent applications
- The results of your application
- Frequently asked questions

## Haringey Schools

- Types of schools in Haringey
- Admissions criteria for community and voluntary controlled schools
- How the criteria were applied last year
- Schools A-Z

## Additional Information

- In-year admissions
- 14-19 Schools (UTCs and Studio Schools)
- Education Welfare Service
- Free School Meals
- Independent (private fee paying) schools
- LGO
- Ofsted
- Special Educational Needs
- Schools in other authorities
- Useful contact details

# Don't be late!

Apply online by 31 October 2022  
**[www.eadmissions.org.uk](http://www.eadmissions.org.uk)**

- ✓ It's secure and easy
- ✓ You will receive email confirmation that we have received your application
- ✓ You can make changes to your application until the deadline
- ✓ You find out the result of your application before paper applicants



**Home**

Applying  
for a school place

Haringey schools

Sixth Form

Additional  
information

**Apply now**  
eAdmissions

# Keeping young people healthy as they prepare to start secondary school

## As your child gets ready for secondary school, please note:

- **Immunisation** Vaccination protects your child from serious diseases. Before starting secondary school, please check their vaccination record (red book). If they have missed any childhood vaccines, been vaccinated in another country or you are unsure, speak to your GP who will advise on what vaccines your child needs to stay safe.
- **The HPV vaccine** is offered to girls and boys in Year 8, it is highly effective at protecting against some cancers. In Year 9 children will be offered the 3-in-1 teenage booster and meningitis vaccine. These vaccines are all given in school. Please complete the consent form when you received it, to allow your child to receive the vaccines and stay protected.
- **Eating a healthy**, varied diet and keeping active is important for good health and may help in dealing with times of stress, for example exams, school moves and family situations. Eating healthily doesn't have to mean giving up favourite foods. It simply means eating a variety of foods and cutting down on food and drinks high in fat and sugar, such as sugary fizzy drinks, crisps, cakes and chocolate.
- **Don't dismiss any apprehension** your child says they're feeling about starting secondary school. It's important to listen to their worries and have a think about what you as parents/carers can do to help. As your child prepares to enter a new, unknown world of secondary education there's perhaps never a more important time to nurture their confidence and self-esteem.

## More information:

See information on [NHS vaccination programme](#).

Vaccination UK provides vaccinations in schools. See [their website](#) for details.

Download free Better Health - Healthier Families\_ food scanner to find out what is in your food.

Find safe walking and cycling routes to school using [WalkIt website](#).

[KOOOTH](#) offers mental health support to children and young people aged 11-18 years.

A healthy lifestyle is important for parents and carers too. [One You Haringey](#) provides support and advice to adults wanting to be smoke free, drink less and be more healthy. Go to their [website](#) or call 020 8885 9095

# Secondary-school aged vaccination

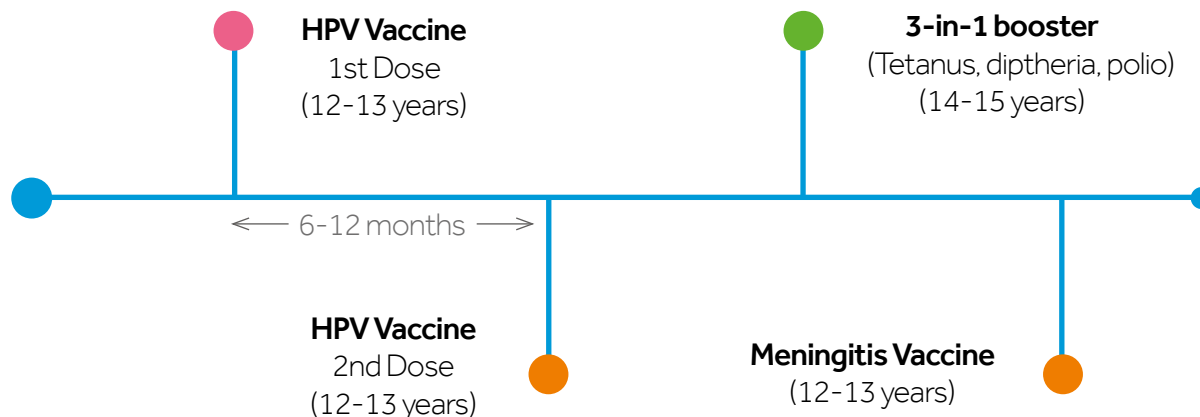
## Vaccination protects your child from serious diseases.

Before starting secondary school, please ensure your child is up to date with all their childhood vaccines.

If your child has missed any childhood vaccines, been vaccinated in another country or you are unsure, speak to your GP who will advise on what vaccines your child needs to stay safe.

## During secondary school your child will be offered the following vaccines:

- The **human papillomavirus (HPV) vaccine** is offered to girls and boys in Year 8. It is highly effective at protecting against some cancers, such as cancers of the cervix, mouth and throat.
- The **3-in-1 teenage booster and meningococcal ACWY vaccine** are offered to young people in year 9. These boost protection against; **tetanus, diphtheria and polio** and protect against **meningitis and blood poisoning** (septicaemia).



These vaccines are all given in school by Vaccination UK. Please complete the consent form when you receive it, to allow your child to receive the vaccines and stay protected.

For more information:  
[www.haringey.gov.uk/childhood-vaccinations](http://www.haringey.gov.uk/childhood-vaccinations)

# Applying for a school place

[Admissions 2023](#)

[Deciding on a school](#)

[Myth busters](#)

[Applying online](#)

[Fraudulent applications](#)

[Frequently asked questions](#)

[The results of  
your application](#)



[Home](#)

[Applying  
for a school place](#)

[Haringey schools](#)

[Sixth Form](#)

[Additional  
information](#)

[Apply now  
eAdmissions](#)

# Applying for a school place

## Secondary Admissions 2023

If your child was born between 1 September 2011 and 31 August 2012, you will need to apply for your child to start secondary school in September 2023.

## Sixth Form Admissions

Admissions to sixth form are dealt with directly by schools or by the Haringey Sixth Form College. You can find out more about the admission criteria for sixth form in

[Sixth Form Admissions Criteria](#)

## SEND Admissions

Haringey provides a range of specialist facilities and support services for children with special educational needs and/or disabilities (SEND). The special educational needs of most children are met in mainstream schools where additional help is available. In certain cases a special school or unit may be appropriate. Information about provision for children with special educational needs and/or disabilities (SEND) is available from the SEN team.

If your child has a statement of Special Educational Needs or an Education Health and Care Plan, their transfer to secondary school will not be via the normal admissions procedure set out in this booklet. The SEN Service will write to you in September and explain the procedure for applying for a secondary school for your child. If you have any questions about this process please contact the SEN team.

Tel: 020 8489 1913

Email: [Sendteam2@haringey.gov.uk](mailto:Sendteam2@haringey.gov.uk)



Home

Applying  
for a school place

Haringey schools

Sixth Form

Additional  
information

Apply now  
eAdmissions



# Applying for a school place

## Key dates for Secondary Admissions

Date	What will happen?
1 September 2022	Applications open
31 October 2022	Application deadline
1 March 2023	Offer day/online outcome Online applicants will receive notification of their offer in an email Paper applicants will be sent an offer letter
15 March 2023	Acceptance deadline - online applicants should accept their offer online
3 April 2023	Appeal deadline



# Applying for a school place

## Deciding which school place you would like to apply for

### 1. Consider how likely it is that your child will be offered a place at your preferred schools.

Read the admissions criteria for each school and look to see which criteria apply to your child. See the [Admissions Criteria](#) for Haringey community schools.

### 2. Look to see how many places each school has available. This is called the Published Admission Number (PAN).

The admission number for each school is listed under each school's entry in [Haringey Schools A - Z](#)

### 3. Please use Haringey's online [Distance Calculator](#) to find your home to school distance measurement.

If you are a Haringey resident then you can use the online tool to find out your home to school distance. Please note that this tool will only work for Haringey schools.

If you are applying to schools outside Haringey you will need to contact the borough where the school is located for your home to school distance measurement.

If you live outside Haringey and you would like to find out your home to school distance measurement for a Haringey school then please email your distance request to [schooladmissionscs@haringey.gov.uk](mailto:schooladmissionscs@haringey.gov.uk)

See how the [Oversubscription Criteria](#) was applied last year, including the distance of the last child offered a place at a particular Haringey School.

Please remember that although this information can be used to give you an idea of how likely it is that you will be offered a place at your preferred school, the 'last distance' will change every year. We can never guarantee any child will be offered a place at any school.

### 4. Visit schools.

Please contact each school directly to arrange a visit.

### 5. Read Ofsted reports.

You can view reports at [www.ofsted.gov.uk](http://www.ofsted.gov.uk)

### 6. Consider how your child will travel to school

There is an expectation that children should be able to travel independently, and safe travel should be considered. Parents are encouraged to discuss the route to school with their children and practise this before school starts.



**Do:** Talk to your child about the decision



**Don't:** Let others influence your decision – the right school for your friend's child may not be the right school for your child.

# Applying for a school place

**Myth:** Children in my road go to the school so my child will too.

*The number of pupils offered under each criterion at each school can change every year so just because you know pupils living near you that go to a certain school, it does not mean that your child will be offered a place there.*

**Myth:** My child has a right to be given one of our school choices.

*The schools you list on your application form are not choices but preferences. Each school preference will be processed in accordance with the school's admission arrangements and the highest possible preference will be offered. When we are unable to offer any school listed on your application, we will allocate the nearest school to your home address with an available place.*

**Myth:** Listing one school will mean that you will have to offer me that school.

*If you list only one school and your child cannot be offered a place under the school's admission arrangements, we will offer the nearest school to your home address with a vacancy.*

**Myth:** It does not matter if my form is late.

*If you apply after 31 October 2022, we will look at your application after all those that applied on time and it is very unlikely that you will be offered one of your preferred schools.*

## Myth busters

**Myth:** I live nearer to the school than the last child offered under the distance criterion last year so I'm guaranteed a place.

*Although the information listed in the **Oversubscription Criteria** table can give you an idea of how likely it is that you will be offered a place at your preferred school, the 'last distance' will change every year. We cannot guarantee any child will be offered a place at any school.*



# Applying for a school place

**Myth:** If I apply to a school in another borough, their residents will have priority over me.

*An admissions authority cannot give priority to its own residents and published admissions criteria cannot include the borough of residence. Haringey cannot and does not discriminate between applicants who live in the borough and those who do not.*

**Myth:** I have an older child already at the school so I do not need to apply.

*Even if you have an older child at the school, without an application you will not be considered. Also, some schools do not have a sibling criterion. Please look at the admissions criteria for the school you are applying for.*

**Myth:** Listing the same school six times will improve my chances of being offered a school.

*Your child can only be considered once for a school and any duplicated preferences will be deleted.*

**Myth:** Our primary school is very near to the Secondary school we want and all my child's classmates will be going there so we will also automatically go there.

**Myth:** I can only apply for Haringey schools.

*You can apply for both Haringey and out of borough schools by naming them on the Haringey application form.*

*There is no guarantee that you will be offered the Secondary school near to the primary school your child attends. Your application will be processed in accordance with the school's admission arrangements. Please be aware that most children are considered under the distance criterion.*



Home

Applying  
for a school place

Haringey schools

Sixth Form

Additional  
information

Apply now  
eAdmissions


# Applying for a school place

## Key information to consider

- We recommend that you list six schools on your application form. This will maximise the possibility of your child being offered a school you would like them to go to.
- The schools can be in Haringey or elsewhere.
- Please list the schools in the order you most prefer them.
- Please do not list any private fee-paying schools on the form.
- You must check if any of the schools you are applying for require a Supplementary Information Form (SIF) to be completed. We have clearly shown in the **Haringey Schools A - Z** of this booklet which Haringey schools have a SIF. You will need to ask the school for the SIF.

---

## Before you make your application

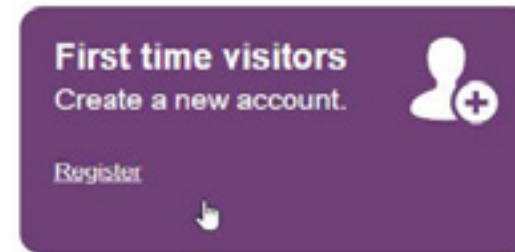
- Before starting your application please ensure you have a valid email address.
- Apply online from 1 September 2022 at [www.eadmissions.org.uk](http://www.eadmissions.org.uk)
- Please read all the information on our [School Admissions page](#) before clicking on 
- Once selected, you will be taken to the eAdmissions website hosted by the London Grid for Learning
- Before you make your online application you must register with the London Grid for Learning website.

# Applying for a school place

## Register to apply online

If you do not already have an existing account, select 'Register to apply' select '**Register to apply online**' or '**Create a new account**'.

1. Enter your name and contact details, then click Next.
2. Select your home address. You may need to scroll down on the address list as it is not always displayed in numerical order. Then click Next.
3. Create a password for your account. It must be between 6 and 16 characters long. Then click Next.
4. Complete the answers to 3 security questions, then click Next.
5. Your account has now been created. Make a note of your password and username, then click where it says 'Click here to continue your eAdmissions application'
6. Log in to the eAdmissions website to start your child's application.
7. You will be sent a validation email after you login to the eAdmissions website. **You MUST click the link in this email to validate your account.** If you do not validate your account then you will not be able to make an application for your child

A white registration form titled 'New Account' with the instruction 'Please enter your details below.' The form contains the following fields:

- 'Title \*' dropdown menu with 'Mr' selected.
- 'First name \*' text input field containing 'John'.
- 'Last name \*' text input field containing 'Smith'.
- 'Postcode \*' text input field containing 'SW1A 2AA'.
- 'Search' button.

# Applying for a school place

## Confirm your personal details

1. Visit your email account and click the link in the email which has been sent to you to validate your account. If you do not validate your account then you will not be able to continue with your application.
2. Log in to the eAdmissions site to create your application.
3. Check that all the information you have provided is correct. Click 'Change Details' to make any changes.

Please ensure the address you provide is your child's permanent address. This will be checked against council records.

You may need to scroll down on the address list as it is not always displayed in numerical order.

If you are unable to locate your address do not use an address which is not your own. Instead, please call 020 8489 1000 or email [schooladmissions@haringey.gov.uk](mailto:schooladmissions@haringey.gov.uk).

For more information about addresses, see

[Frequently Asked Questions](#)

## Your details

Please check and confirm your details are correct.

[Change details](#)

Personal Details	
Title	Miss
First Name	Jane
Last Name	Smith
Address	RIVER PARK HOUSE 225 HIGH ROAD WOOD GREEN LONDON N22 8HQ

Contact details	
Email Address	<a href="mailto:schooladmissions@haringey.gov.uk">schooladmissions@haringey.gov.uk</a>
Home Phone Number	02084891000

[Home Page](#)

[Home](#)

[Applying  
for a school place](#)

[Haringey schools](#)

[Sixth Form](#)

[Additional  
information](#)

[Apply now  
eAdmissions](#)

# Applying for a school place

## Starting your application

- On the Home page click [Start Application](#)

## Entering your child's details

- Make sure you enter the information accurately.
- Make sure you only apply for a child born between 1 September 2011 - 31 August 2012
- Parents with multiple birth children must complete a separate application form for each child. See [Frequently Asked Questions](#)
- Click **'Save and Continue'** to continue with your application.

### Child details

Child's name must be as it appears on their birth certificate

First Name \*

Middle Name

Last Name \*

Date of Birth \* ⓘ

Gender \* ⓘ

Boy

Girl

Address \* ⓘ

Use your home address

RIVER PARK HOUSE  
225 HIGH ROAD  
WOOD GREEN  
LONDON  
N22 8HQ

[Save and continue](#)

[Home](#)

[Applying  
for a school place](#)

[Haringey schools](#)

[Sixth Form](#)

[Additional  
information](#)

[Apply now  
eAdmissions](#)





# Applying for a school place

## Checking your child's details

- Check that the information you have entered is correct.
- If you need to make change, click **Change details**
- If all the details are correct click 'Save and
- Continue' to continue with your application.

## Are these details correct?

- When correct select 'Save and continue'
- If incorrect then select 'Change details'

Child details 	<a href="#">Change details</a>
Full name : <b>Jane Smith</b>	
DoB : <b>01/01/2016</b>	
Gender : <b>Girl</b>	
Address :	
<b>River Park House</b>	
<b>225 High Road</b>	
<b>Wood Green</b>	
<b>London</b>	
<b>N22 8HQ</b>	
Child details continued 	<a href="#">Change details</a>
Multiple birth : <b>No</b>	
Has been in care : <b>No</b>	
Has an Education Health and Care Plan (EHCP) : <b>No</b>	

# Applying for a school place

## Adding your school preferences

- Click Add School
- You can find schools using a list of schools in each borough, or a map, or using keywords
- To find schools in a list, select the Local Authority the school is located in (e.g. Haringey).
- Select and add the school you wish to apply for. You can apply for up to six school
- For each school selected, you will be asked a series of questions (such as whether there is a sibling at the school or if you wish to apply under the social/medical criterion).
- For each school you select, make sure that you have read the school's admission criteria. This will act as a guide as to the likelihood of being offered a place at your preferred school.
- For more information see [Frequently Asked Questions](#)

Use the arrows to change the order of your preferences.

<b>Add school</b>	
	↓
<b>Hillside School, Brightwater Avenue</b>	
<a href="#">Edit</a>	<a href="#">Delete</a>
	↑ ↓
<b>Parkside School, Church Lane</b>	
<a href="#">Edit</a>	<a href="#">Delete</a>
	↑
<b>Merryweather School, Puddle Lane</b>	
<a href="#">Edit</a>	<a href="#">Delete</a>

Click 'Add School' to add more preferences.

Add school

Confirm selection

Click 'Confirm Selection' to continue with your application

Home

Applying  
for a school place

Haringey schools

Sixth Form

Additional  
information

Apply now  
eAdmissions

# Applying for a school place

## Submitting your application

- Check that all of your details are correct.
- Read the declaration and tick the box to accept it.
- Click the **Submit application** button.
- Your application has now been submitted. Click **Upload documents** to upload your documents.
- You will receive an email confirmation with your Application Reference Number - 309- 2023- E - XXXXX
- If you do not receive an email confirmation with your Application Reference Number contact us to check if your application has been submitted correctly.

## Don't forget!

You must click the submit button by the closing date of 31 October 2022. If you do not do this, your application will not be processed.

## Check & submit application

Please check the information you have supplied and then submit your application for processing by your home Local Authority.



London Borough of Haringey  
020 8489 1000  
schooladmissions@haringey.gov.uk

Child details

Child name

### Declaration

By submitting this form I agree to the following:

- I have read the admissions guidance issued by the Local Authority.
- I wish to apply for a place at each of the schools named.
- I will keep the Local Authority informed of **any** change or lead to the offer of a place being withdrawn.
- I understand that the Local Authority may take steps to lead to the offer of a place being withdrawn.
- I understand that any false or deliberately misleading information provided in this application within the Local Authority area will lead to the offer of a place being withdrawn.
- I understand that the Local Authority where I live is under no obligation to accept my child for a place at any of the schools named in this application.



I have read and accepted the above declaration

**Submit application**

Home

Applying  
for a school place

Haringey schools

Sixth Form

Additional  
information

Apply now  
eAdmissions

# Applying for a school place

## Fraudulent Applications

Haringey Council takes any attempt to obtain a school place through fraudulent means very seriously. We reserve the right to undertake checks to verify any information provided on your application form. If we find out that a school place was obtained using a false or misleading address, we will withdraw the offer and give it to the child who was entitled to the place.

We consider that every school place obtained by deception is unfair, as other children are being deliberately denied their legitimate claim to take up that place. Rigorous checks will be carried out to ensure that applications are not fraudulent.

We carry out random checks on a number of applications and we reserve the right to carry out home visits to the address used on an application form.

We will also ask the new school to check the child's home address at the time of admission.

If it is different from the address on the application form, we will check whether the previous address was a temporary address, used for the purposes described above.

If the place is obtained for an older child using fraudulent information, there will be no sibling connection available to subsequent children from that family.

If you suspect someone intends to use, or has used, a false address to obtain a school place, please complete the [fraudulent address referral e-form](#) on the Haringey website.

Alternatively you may wish to email [fraudcall@haringey.gov.uk](mailto:fraudcall@haringey.gov.uk) in confidence. You may also wish to write to [schooladmissions@haringey.gov.uk](mailto:schooladmissions@haringey.gov.uk)

All cases will be investigated.

If we find that a place has been obtained using fraudulent information, there will be no sibling connection available to subsequent children from that family. We may also withdraw the place even after your child has started school.

More information on how and the reasons why we investigate suspicious applications is available online in our address of convenience protocol at [www.haringey.gov.uk/fraudulent-applications](http://www.haringey.gov.uk/fraudulent-applications)

# Applying for a school place

## What happens if my application is being investigated?

If you receive an Address of Convenience form asking you to complete the relevant sections and to provide supporting documentation please do not be alarmed and read all the information enclosed carefully. You must ensure that you provide all the required evidence you wish to submit in support of your application as this evidence will be crucial in deciding which address we will use for the purpose of your school application.

Your evidence will only be considered once before National Offer Day and any further evidence will not be looked at until after national offer day.

## First panel meeting – January 2023

All the relevant evidence you submit will be considered by the relevant admission authority before national offer day in January 2023.

## Second panel meeting – April 2023

Any new applications under investigation or further evidence not considered because it was supplied after the January deadline will be looked at in April 2023.

The decision made by the relevant admission authority on which address to use for the purpose of your school application will be final.

## Withdrawing places even after your child has started school

Your school and Haringey will revisit all cases investigated to ensure that your child is still living at the address supplied on your application. We reserve the right to withdraw your child's school place even after your child has started school.



[Home](#)

[Applying  
for a school place](#)

[Haringey schools](#)

[Sixth Form](#)

[Additional  
information](#)

[Apply now  
eAdmissions](#)

# Applying for a school place

## Frequently Asked Questions

### What is a 'main residence'?

The address you provide must be your child's only or main residence on the closing date of the application. The only or main residence is considered to be the place where the child sleeps and spend most of their time, from Monday to Friday. Parents are not permitted to use a temporary address to secure a school place for their child. A business address, a childminder's address or any address including a family member's address other than the child's only or main residence will not be accepted. Proofs of address will be sought in all cases and if there is any doubt about the validity of the address given the application will be the subject of further investigation.

#### Please provide the following evidence:

- Council tax reference number (as shown on your annual bill or direct debit statement), and/or tenancy agreement.
- A copy of your gas or electricity bill dated within three months of 31 October 2022

We will use council records to verify addresses.

### Do you accept temporary address?

We will not accept a temporary address if you still possess a property that was previously used as a home address, nor will we accept a temporary address if it is used solely or mainly to obtain a school place. If you own a property but are living at and apply from a different address, the council will consider that the second address is temporary and that the property you own is where the child normally lives. Where the owned property is being renovated, this will still be considered the child's only or main residence.

Evidence will otherwise be required that the property has been disposed of. If a family own more than one property, the council will request further evidence to demonstrate where the family normally live to determine the address we will use for the child's application.

### What if my child lives at two addresses?

If parents are separated, the application should be made by the parent the child normally lives with. Where a child spends equal time during the school week with each parent, the exact arrangements must be made clear in a letter with a copy of any custody or residency order submitted with the application. It is the parents' responsibility to agree between themselves and make clear which address will be used and to provide supporting evidence in respect of that address. Your application for a school place can only be processed from one address. The final decision about which address is to be used for admission purposes rests with the admission authority.

### What if I change my address after applying?

We can only accept changes of address once they have taken place. We will not be able to process your application from an intended address. Notice of an actual change of address must be provided to the Haringey Admissions team in writing with the appropriate evidence.

If you move address, please let us know immediately

# Applying for a school place

and provide the evidence set out above. If you do not tell us about a move, or about a declared house move that has failed to take place, we may withdraw your application or any offer of a school place we have made.

All changes of address will be thoroughly investigated and for a change of address to be taken into account for your admission application, you must have taken up residence before 9 December 2022. If we receive the required proof of address on or before the 9 December 2022 then we will be able to use your new address to measure your home to school distances. If we receive the information after the 9 December 2022 we will not be able to update your home to school distances until after 1 March 2023 (national offer day).

## What if my child is a Looked After or previously Looked After child?

Please let us know if your child is in care to a Local Authority or previously looked after. Previously looked after children are children who were looked after, but ceased to be so because they were adopted (or became subject to a child arrangements order or special guardianship order).

Please indicate on your application form if your child is looked after or previously looked after.

Where a child is in care we will need a letter from your child's social worker or Local Authority to confirm this. Where a child is previously looked after we will need a copy of the adoption, child arrangements or special guardianship order and documents or a letter showing your child was previously in care. The definition of previously looked after children includes children who appear (to the admission authority) to have been in state care outside of England and ceased to be in state care as a result of being adopted. Documentary evidence of adoption and that your child was previously looked after will be required in line with the information set out in the [DfE guidance](#).

For your application to be considered under the looked after or previously looked after criterion please make sure you provide all the evidence outlined above. If you do not provide this information your application may not be considered under this criterion. **It is your responsibility to provide all the relevant evidence and to arrange for a letter to be sent to us from the social worker, adoption agency or other organization that has been involved with your child,**

## What is an exceptional social/medical reason?

All schools in Haringey have experience in dealing with

children with diverse social and medical needs.

However, there may be exceptional cases where there are compelling reasons why a child needs to attend one specific school.

For your application to be considered under the social medical criterion you must provide written evidence from a doctor, social worker or other independent professional. In each case, the connection between your child's need and the specific school must be made and you must clearly demonstrate why this one specific school can meet your child's needs in a way that no other school can.

Evidence relating to the social or medical circumstances of the parent can be considered, but only if this impacts on the child and their need to attend one specific school.

Please ensure that you submit all relevant information, including professional evidence with your application for a school place. A panel of officers will determine whether the evidence provided is sufficiently compelling to meet the above requirements. You will be notified of the panel's decision in writing and the letter will indicate what criterion we will use to process your application.

Please provide evidence by the application deadline of 31 October 2022. Any evidence submitted following the application deadline will not be considered until

Home

Applying  
for a school place

Haringey schools

Sixth Form

Additional  
information

Apply now  
eAdmissions

# Applying for a school place

after 1 March 2023.

Priority under this criterion can only be given for one specific school but we still recommend that you do list 6 schools on your application form to maximize your chances of securing one of your preferences. We may have to share the information you have provided with the offered school.

## What is defined as a 'sibling'?

If your child has a brother or sister already attending any of the schools you must tell us this in your application and give the relevant details. In Haringey a sibling is defined as a full brother or sister, a step/half brother or sister, a foster brother or sister or an adopted brother or sister living at the same address as the child for whom the application is being made. The term does not include cousins or any other family member.

For community schools, priority under the sibling criterion will only be given to children with a sibling attending in years 7-11 on the date of admission. It does not apply to children with a sibling attending the school nursery. Full details on the sibling criterion for other types of schools can be found under each of the individual schools on [Haringey Schools A-Z](#)

For your application to be considered under the sibling criterion please make sure you include the details of

any brothers or sisters who are already attending the school. If you don't tell us you may lose out on the sibling connection.

## What is a 'distance criterion'?

The vast majority of school places in Haringey are offered under the distance criterion. Haringey measures distance in a straight line from the Ordnance Survey address point of the child's home address to the Ordnance Survey address point of the school, calculated using a computerised mapping system. Where applicants have identical distance measurements, priority will be determined at random using the Haringey computerised mapping system.

There are a number of websites that calculate distances to and from different addresses. The measurements on these websites can only serve as a guide and will provide approximate distances.

Haringey does not use these websites to calculate distances in relation to offering school places.

If you are a Haringey resident then you can use the Haringey online distance measurement tool to find out your home to school distance.

This tool only works if you would like your home to school distance measurement for a Haringey school.

If you are applying for a school outside Haringey,

please contact the borough where the school is located for your home to school distance measurement.

Contact details for our neighbouring boroughs can be found in [Additional Information](#).

**We do not provide measurements to an intended or temporary address; please provide your child's only or main address when making your request.**

See how the [Oversubscription Criteria](#) was applied last year, including the distance of the last child offered a place at a particular Haringey school. This information can be used to give you an idea of how likely it is that your child will be offered a place at your preferred school. The furthest distance changes every year and we can never guarantee that any child will be offered a place at any school.

**Start your home to school distance measurement here:**  
[www.haringey.gov.uk/distance](http://www.haringey.gov.uk/distance)

Home

Applying  
for a school place

Haringey schools

Sixth Form

Additional  
information

Apply now  
eAdmissions



# Applying for a school place

## What if I have twins or triplets (multiple birth children)?

Parents with multiple birth children must complete a separate application form for each child. If only one place is available at a community school and the child who qualifies for that place is one of multiple birth, we will ask the school to go over their published admission number. If this happens at an academy, foundation, voluntary aided or free school the council will ask the governing body of the school if an additional place can be offered, but the decision will rest with the governing body.

Please ensure that you tick the multiple birth box on each application and check the order and list of preferences for both children prior to submitting the application.

The multiple birth rule does not apply to siblings that fall under different criteria, unless they are the next child to be offered and the school is not already over their Published Admission Number. For example, if only one twin has an EHCP naming a school, there is no automatic right for the child without an EHCP to attend the same school unless they are at the top of the waiting list, and the school is not over their Published Admission Number.

## Can I apply if my child lives overseas?

If you have a property in the UK you should contact the local authority for that address for more information. If you do not have a UK property, you should contact the local authority where your preferred school is located for more information.

You must apply by the deadline and provide information about where you are living outside of the UK, and when you intend to return/arrive. You may be asked for evidence of your intention to return to/enter the UK.

We will consider the application based on your child's address overseas and any subsequent change will be considered in line with our change of address policy. For more information on our change of address policy,

see our [Frequently Asked Questions](#).

A United Kingdom address will only be used once your child is residing at that address, and evidence will be required of this. We will not accept an intended UK address even if you own the property.

It is your responsibility to notify Haringey once your child is resident in the UK.

## Can I apply as a Member of the Armed Forces or Crown Servant?

Members of the Armed Forces and Crown Servants with automatic right of entry to the UK, who are able to provide evidence of their relocation, may apply for a school place ahead of a move. An application can be made as soon as confirmation of the relocation is available.

For Armed Forces applications we will use the unit posting address when considering the application. For Crown Servants a UK address can only be used if there is evidence of the address the child is returning to. There is no guarantee that a place will be available at a preferred school; each application will be considered in accordance with the school's admissions criteria.

# Applying for a school place

## What if I make more than one application?

Parents can only submit one application. If two or more applications are submitted, we will process the latest dated application and any earlier ones will be disregarded.

## What if I submit my application late?

Applications received after 31 October 2022 will be classed as late. Late applications will be considered after all the other applications that were received on time.

If there are exceptional circumstances why your application was received after the deadline, please provide independent written evidence by 9 December 2022 (from someone who is impartial) explaining why the application was late. This information will be considered by a panel and we will let you know if your application will be processed as late or 'on time'.

Late applicants are very unlikely to be offered one of their preferred schools.

## Can I change my preference before the application deadline?

If you have applied online you can make changes up until the closing date by returning to the online e-admissions website and editing your application. You must re-submit your application each time you edit your application online.

If you send in a paper application before 31 October 2022 and then decide to make changes, you can still do this as long as we receive written requests by 31 October 2022.

Changes requested over the telephone will not be accepted. Preferences cannot be changed after 31 October 2022 unless you move to a new permanent address and you will need to let us know and provide the relevant proofs by 9 December 2022.

## How will you process my application?

Each school you list is considered at exactly the same time. This includes schools in Haringey and schools located in other boroughs.

The published admissions criteria (also called admission rules or admission arrangements) will be applied to every school you list.

- Our computer system works out who can be offered a place at Haringey community schools. See [Admissions Criteria](#) for Haringey community schools.
- The governors of academies, foundation, voluntary aided and free schools apply their criteria to all their applicants and let us know who should be offered a place.
- Other boroughs apply their criteria and let us know which Haringey residents can be offered places at their schools.

Each school has a set number of places that can be offered (the published admission number) and places are offered until the school is full or there are no more applicants for that school.

If a child can be offered more than one place then the highest possible preference will be offered.

Places are offered in accordance with the schools' admissions criteria and your child may qualify for more than one school. Please see Table A below. Please therefore list your schools in the order you prefer them. This is very important because only one offer will be made and this will be for the highest preference school for which your child has qualified under the admission criteria.

# Applying for a school place

## Summary of application process

Application received



Criteria applied to each preference



Places are offered up to the Admissions Number at each school



Highest possible preference offered to each child

## What happens if my child is not offered one of my preferred schools?

Sometimes we cannot offer any school listed because in every case other applicants met the admissions criteria better than your child did. For example, other applicants lived closer to the school.

If this happens we will offer a place at the nearest school with an available place. With the governors' agreement, it may be possible to allocate places at academies, foundation, voluntary aided and free schools, if there are any available.

Table A

Preference	List preferences	Does my child qualify for this school?	Which school is offered
1	School A	✗	
2	School B	✓	✓
3	School C	✗	
4	School D	✓	
5	School E	✗	
6	School F	✗	

*The place at school D would be offered to the next child who best meets the admissions criteria.*

# Applying for a school place

## Admission outside the normal age group

A child's chronological age group is the normal year group they should attend in a UK school, based solely on their date of birth.

### What if my child is educated outside their normal age group?

For a child educated in primary school outside their normal age group, parents should first apply for a secondary school when the child is in year 5 (rather than year 6).

The DfE is clear that unless there are sound educational reasons to do otherwise, if a child has been educated outside their normal age group in primary school, the assumption should be that they remain outside their normal year group during secondary school. However, there are a number of potential risks a child could face if educated outside their normal year group in secondary school, including the fact that a child may later decide to leave school before they have the opportunity to take public examinations.

### What do I need to do?

- Complete a secondary school application when your child is in year 5
- Write to the School Admissions Service requesting that your child continue being educated outside their chronological age group. Email your request with the words 'secondary delayed entry' in the subject line to [schooladmissions@haringey.gov.uk](mailto:schooladmissions@haringey.gov.uk)
- You MUST include with your email a letter from your child's current headteacher explaining why your child is out of year group.

The admission authority for a secondary school will consider all requests for a child to be educated out of their chronological year group and will decide on the basis

of the circumstances of the case and in the best interests of the child. They will consider a wide range of factors including parent's views and whether the child has previously been educated out of their normal age group in primary school. The views of the head teacher of the current and preferred schools will be an important part of this process.

### Next steps

We will let you know whether your preferred schools agree to consider your application a year later than your child's chronological age group.

Remember this is not an agreement that your child will be offered a place at your preferred schools. Only that they agree to process your application a year late.

If schools agree:

- We will cancel your current secondary school application
- You should re-apply for a secondary school a year later, when your child is attending primary school in year 6
- You will need to apply at that time using a paper or PDF application form. Please contact us at School Admissions for the application form
- Include again the letter from your child's current headteacher

Remember if you later choose to apply for schools which were not consulted while your child was in year 5, these schools may refuse to process your child's application for year 7 outside their chronological age group.

If schools do not agree:

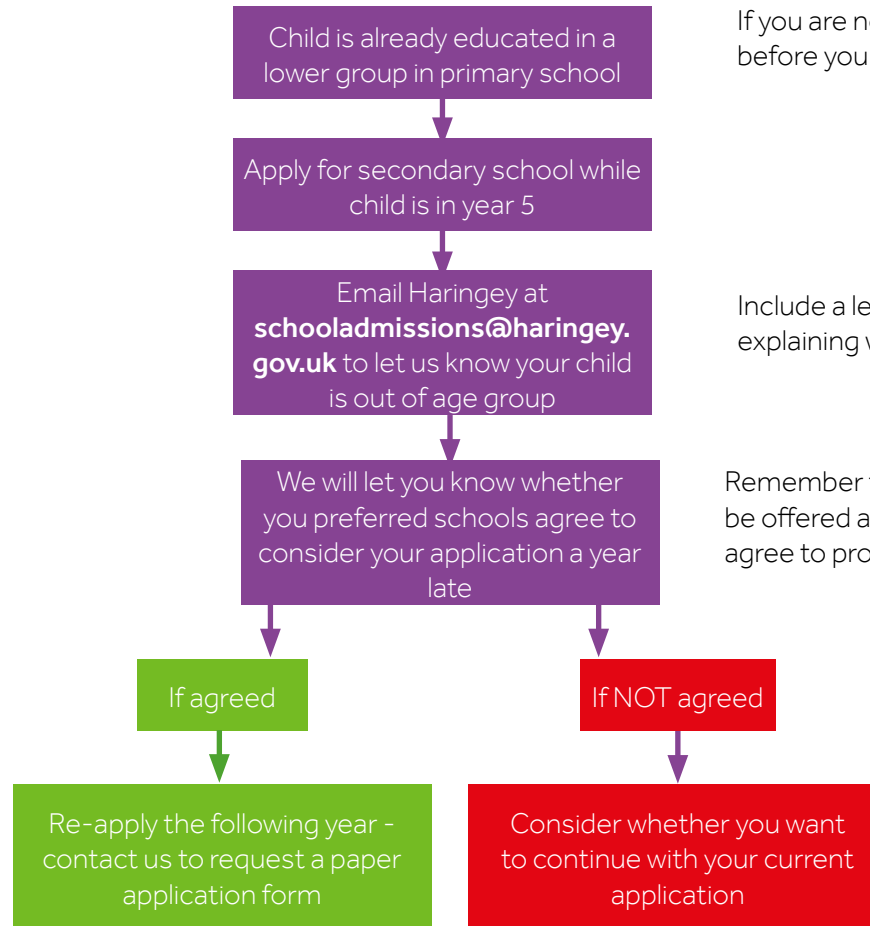
- Let us know whether you want to continue with your current application for year 7 places at your preferred schools, while your child is in year 5.

# Applying for a school place

## Haringey Residents Educated out of Age Group in Primary School

### Right of appeal

Parents have a statutory right to appeal against the refusal of a place at a school for which they have applied. However, this right does not apply if your child is offered a place at the school but it is not in your preferred age group.



If you are not a Haringey resident speak with your home borough before you apply, as they may have a different process

Include a letter from your child's current headteacher, explaining why your child is out of year group

Remember this is not an agreement that your child will be offered a place at any of these schools - only that they agree to process your application a year late

# Applying for a school place

## The results of your application

Online applicants will NOT receive an offer letter on 1 March 2023. You will receive an email notification and you will be directed to our website to view your letter. Waiting list information and the information on your right of appeal set out below will be included in this letter.

Date	What will happen?
1 March 2023	Online applicants will receive notification of their offer in an email Paper applicants will be sent an offer letter
15 March 2023	Acceptance Deadline - Online applicants should accept their offer online

## Accepting the offer

Please accept your offer online by 15 March 2023. If you do not accept your offer, you will be asked what arrangements you are making for your child's education in September. Please email [schooladmissions@haringey.gov.uk](mailto:schooladmissions@haringey.gov.uk) with any further questions regarding your offer.

Remember that the offer you receive will be either:

1. The highest preference school your child qualified for (offer)
2. The nearest school with an available place (allocation)

Accepting the offer will not influence your waiting list position or appeal outcome.

Please note we will not give out any offer information over the phone.

You must contact your home Local Authority to accept or refuse a school place. Please do not only respond directly to schools.

# Applying for a school place

## Waiting lists

If we cannot offer you your first preference school, your child's name will automatically be added to the waiting list for any schools on your form listed higher than the school you have been offered. Waiting lists are ordered strictly in accordance with the school's admissions criteria.

Waiting list positions can change at any time depending on other applicants' circumstances and it is important to note that your child's position may go down as well as up if other applicants join the waiting list.

Waiting lists are renewed each academic year and we will write to you to ask you to complete a new application form if you would like your child to be placed back on school waiting lists. If you would like your child to remain on the waiting list for any outborough schools, please contact the borough the school is located in for more information.

## School admission appeals

If your child is not offered a place at one of the schools you listed on your form you can appeal against this decision to an independent appeal panel. You will be given details of how to make an appeal in your offer letter. The deadline to appeal is 3 April 2023.

Appeals are heard by an independent appeal panel of three members of the public. You can only make one appeal for each school listed on your form. If you did not get a place at more than one school you listed on your application, you can make a separate appeal for each school.

Please be aware that if one of these schools is a voluntary aided school, free school or an academy, you have to appeal to the school direct as they are responsible for organising their own appeals.

When you indicate your wish to appeal for a secondary school place you will be contacted by the Appeals Administrator 10 days before the hearing to confirm the date. Details of the appeals timetable will be published on our website by 28 February 2023.

You are able to submit additional evidence or documentation that might be relevant to your appeal. Please submit any evidence as soon as possible and before the hearing. This is so that all the other participants have time to read your information.

Where possible, appeals for late applications will be included with those being heard for the same admissions round. However, if this is not possible, appeals for late applications will be heard during the 2023 autumn term.

# Applying for a school place

## Appeals for admission to secondary classes in 2020 – 2022

Name of School	2020			2021			2022		
	Lodged	Heard	Upheld	Lodged	Heard	Upheld	Lodged	Heard	Upheld
Alexandra Park	40	34	3	54	48	1	36	31	1
Duke's Aldridge Academy	Contact school directly for appeal figures								
Fortismere	20	14	0	23	18	1	32	23	2
Gladesmore Community	14	13	1	17	14	0	20	17	0
Greig City Academy	Contact school directly for appeal figures								
Harris Academy Tottenham	Contact school directly for appeal figures								
Heartlands High	10	7	0	13	9	1	11	9	0
Highgate Wood	14	8	1	15	4	0	25	15	1
Hornsey School for Girls	3	0	0	0	0	0	0	0	0
Park View	1	0	0	3	0	0	1	0	0
St Thomas More Catholic	Contact school directly for appeal figures								
Woodside High	Contact school directly for appeal figures								
<b>Total</b>	<b>102</b>	<b>76</b>	<b>5</b>	<b>125</b>	<b>93</b>	<b>3</b>	<b>125</b>	<b>95</b>	<b>4</b>



# Haringey Schools

**Location of Haringey secondary schools**

---

**Types of schools in Haringey**

---

**Admission criteria for Haringey community schools**

---

**Schools A-Z**

---

**Sixth Form admissions criteria**

---



[Home](#)

[Applying for a school place](#)

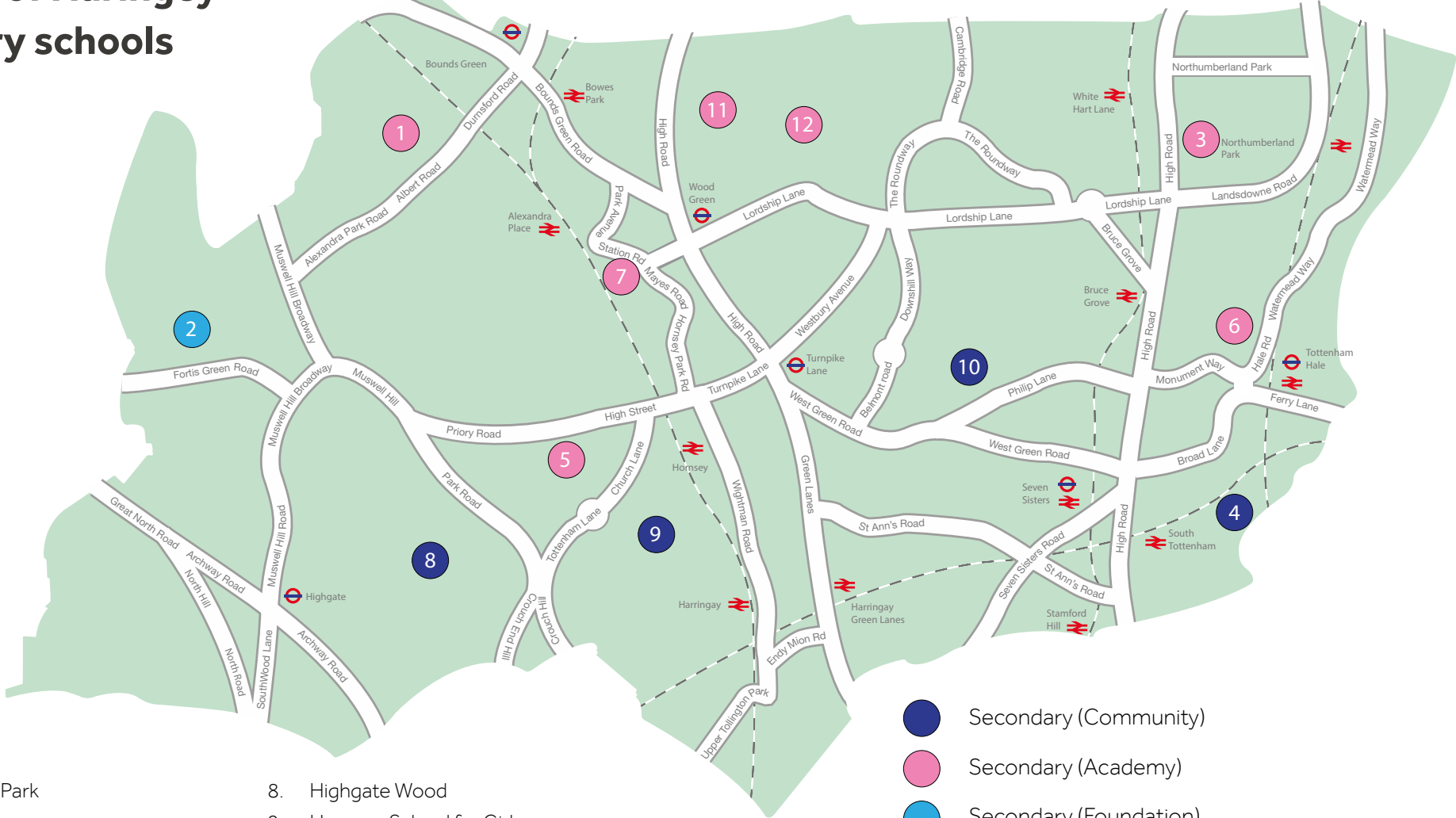
[Haringey schools](#)

[Sixth Form](#)

[Additional information](#)

[Apply now eAdmissions](#)

# Location of Haringey secondary schools



- |                             |                             |
|-----------------------------|-----------------------------|
| 1. Alexandra Park           | 8. Highgate Wood            |
| 2. Fortismere               | 9. Hornsey School for Girls |
| 3. Duke's Aldrige Academy   | 10. Park View               |
| 4. Gladesmore Community     | 11. St Thomas More Catholic |
| 5. Greig City Academy       | 12. Woodside High           |
| 6. Harris Academy Tottenham |                             |
| 7. Heartlands High          |                             |

- Secondary (Community)
- Secondary (Academy)
- Secondary (Foundation)

# Haringey Schools

## Types of schools in Haringey

We co-ordinate applications for all schools in Haringey. Brief definitions of the types of schools in Haringey are given below along with information about how the admission arrangements are set and applied for each school.

### Community Schools **COM**

Haringey Council set and apply the admission arrangements for community schools.

- Gladesmore School
- Highgate Wood Secondary School
- Hornsey School for Girls
- Park View School

### Foundation Schools **F**

A foundation school is a state funded school. The governors of the school set and apply the admission arrangements. Land and buildings are usually owned by the governing body or a charitable foundation.

- Fortismere School

### Academies **ACA**

Academies are publicly funded independent schools. The governors of the school set and apply the admissions arrangements. The following schools are academies and may require you to complete a supplementary information form **SIF**

- Alexandra Park School
- Duke's Aldridge Academy
- Greig City Academy
- Heartlands High School
- St Thomas More Catholic School
- Woodside High

### Free Schools **FREE**

Free schools are non-profit making, independent, state-funded schools. The governors of the school set and apply the admission arrangements.

- Harris Academy Tottenham

## Admissions criteria for community schools

If we receive more applications than spaces available at Haringey community schools then we will apply the following admissions criteria.

### Oversubscription criteria

When the school is oversubscribed, after the admission of pupils with an Education, Health and Care plan naming the school, priority for admission will be given to those children who meet the criteria set out below, in priority order:

#### 1. Children in Care/ Looked After Children

Children who are looked after by a local authority or were previously looked after but immediately after being looked after, became subject to an adoption, child arrangements, or special guardianship order, including those who appear to the admission authority to have been in state care outside of England and ceased to be in state care as a result of being adopted.

#### 2. Social Medical

Children who the Authority accepts have an exceptional medical or social need for a place at one specific school. Applications will only be considered under this category if they are supported by a written statement from a doctor, social worker or other relevant independent professional. The information must confirm the exceptional medical or social need and demonstrate how the specified school is the only school that can meet the defined needs of the child.

#### 3. Brother or Sister (sibling)

Children with a brother or sister already attending the school and who will still

be attending in years 7-11 on the date of admission.

If a place is obtained for an older child using fraudulent information, there will be no sibling connection available to subsequent children from that family.

#### 4. Children of staff

Children of teaching staff of the school where the member of staff has been employed at the school for two or more years at the time of application and/or children of a member of staff who has been recruited to fill a vacancy for which there is a demonstrable skill shortage.

#### 5. Distance

Children whose home address is closest to the preferred school.

Distance will be measured in a straight line from the Ordnance Survey address point of the child's home to the Ordnance Survey address point of the school, calculated using a computerised mapping system.

# Haringey Schools

## Tie breakers

Children cannot be considered under more than one criterion. Within each criterion the sole tiebreaker to decide between two applications is children whose home address is closest to the school, measured in a straight line from the Ordnance Survey address point of the child's home to the Ordnance Survey address point of the school, calculated using a computerised mapping system.

The tiebreaker for two or more applications whose home address is exactly the same distance from the school (and who are not from multiple births) will be random allocation using a computerised system. The random allocation process will be supervised by an independent body.

## Multiple births

If only one place is available and the next child to be offered is from a multiple birth, we will ask community schools to go over their published admission number.

## Notes

- Home address is defined as the child's only or main residence. A business address, a childminder's address or any address including a family member's address other than the child's only or main residence will not be accepted.
- If parents are separated, the application should be made by the parent the child normally lives with. Where a child spends equal time during the school week with each parent, the exact arrangements must be made clear in a letter with a copy of any custody or residency order submitted with the application. It is the parents' responsibility to agree between themselves and make clear which address will be used and to provide supporting evidence in respect of that address. An application can only be processed from one address. The final

decision about which address is to be used rests with Haringey Council.

- Previously looked after children include those children who appear (to the admission authority) to have been in state care outside of England and ceased to be in state care as a result of being adopted. A child is regarded as having been in state care outside of England if they were in the care of or were accommodated by a public authority, a religious organisation, or any other provider of care whose sole or main purpose is to benefit society.
- A sibling is a full brother or sister, a step/half brother or sister, a foster brother or sister or an adopted brother or sister living at the same address as the child for whom the application is being made.
- Priority for children of teaching staff will be limited to one place for each form of entry in any year. Exception to this will apply to children of multiple birth or those born in the same academic year. All such applications must be submitted to the local authority and must be accompanied with the relevant paperwork supporting an application on these grounds. The applicant must take sole responsibility to provide such paperwork. Without the provision of the relevant papers, priority will not be given on these grounds.
- Haringey measures distance in a straight line from the Ordnance Survey address point of the child's home to the Ordnance Survey address point of the school, calculated using a computerised mapping system. Measurements by alternative systems or to other points will not be taken into account in any circumstances. Where applicants have identical distance measurements, priority amongst them will be determined at random using a computerised system.

# Applying for a school place

## Secondary Transfer 2022 – How offers were made

The schools in this table received more applications than places available and this means places could not be offered to every applicant. The table gives information about on time offers as at 1 March 2022. These figures will change if places are declined and then offered to other pupils from the waiting list.

	On-time applications	Total places offered	Children with EHCPs	Children looked after & previously looked after	Exceptional social or medical need	Siblings	"Children of staff"	Children offered under distance	Distance of last child offered (straight-line, miles)
Alexandra Park*	1672	233	18	7	1	93	2	112	0.4580
Fortismere	1429	270	19	2	1	111	4	133	0.481
Gladesmore*	740	244	8	2	0	75	2	157	0.9048
Heartlands High	831	240	14	1	1	57	n/a	167	1.0529
Highgate Wood	1088	243	8	0	1	78	1	155	0.7686
St. Thomas More Catholic	663	192	5	Last child offered under 'Children of other Christian denominations' criterion at 0.212 miles. For full admissions criteria details contact the school directly.					
Woodside High	687	240	10	5	3	69	n/a	153	1.0257

Harris Academy Tottenham*A13:J24	On-time applications	Total places offered	Children with EHCPs	Children looked after & previously looked after	Siblings	Children attending Harris feeder schools	Children of staff	Children offered under distance	Distance of last child offered (straight-line, miles)
Band 1	501	160	7	1	5	1	0	1	0.829
Band 2					10	1		0	0.673
Band 3					2	3		13	0.871
Band 4					11	6		9	0.551
Band 5					12	5		15	n/a all on-time applicants offered
Band 6					3	5		16	
Band 7					3	5		7	
Band 8					2	0		11	
Band 9					1	0		5	
Did Not Attend Banding Test					0	0		0	
Total				49	26		77		

Places could be offered to every applicant who applied on-time to: Duke's Aldridge Academy\*, Greig City Academy\*, Hornsey School for Girls and Park View School\*

\* These schools admitted additional children above their published admission number (PAN).

Home

Applying  
for a school place

Haringey schools

Sixth Form

Additional  
information

Apply now  
eAdmissions

## Alexandra Park School **ACA**

Head teacher:	Michael McKenzie
School address:	Bidwell Gardens, N11 2AZ (Pedestrian access via Albert Road recreation ground or Rhodes Avenue.)
School tel:	020 8826 4880
Email:	<a href="mailto:office@alexandrapark.school">office@alexandrapark.school</a>
Website address	<a href="http://www.alexandrapark.school">www.alexandrapark.school</a>
Contact:	Ms Serap O'Flynn - Transition Manager
DfE number:	309 4036
Gender:	Boys & Girls
Age range:	11-18
Published admission number:	232
Ofsted rating:	Outstanding

**Please check in advance on the school website before attending any open event.**

For a full list of Haringey school open events, please click [here](#)



**OVERSUBSCRIPTION CRITERIA  
VISIT SCHOOL'S WEBSITE**

## Duke's Aldridge Academy **ACA**

Principal:	Monica Duncan
School address:	Trulock Road, N17 0PG
School tel:	020 8801 0091
Email:	<a href="mailto:admin@dukesacademy.org.uk">admin@dukesacademy.org.uk</a> <a href="mailto:crc@dukesacademy.org.uk">crc@dukesacademy.org.uk</a>
Website:	<a href="http://www.dukesacademy.org.uk">www.dukesacademy.org.uk</a>
Contact:	Mr C Cameron
DfE number:	309 4031
Gender:	Boys & Girls
Age range:	11-16
Published admission number:	210
Ofsted rating:	Good

**Please check in advance on the school website before attending any open event.**

For a full list of Haringey school open events, please click [here](#)



**OVERSUBSCRIPTION CRITERIA  
VISIT SCHOOL'S WEBSITE**

# Haringey Schools

## Fortismere School **F**

Co-head teacher:s	Jo Davey & Zoe Judge
School address:	Tetherdown, Muswell Hill, N10 1NE
School tel:	020 8365 4400
Email:	<a href="mailto:office@fortismere.org.uk">office@fortismere.org.uk</a>
Website:	<a href="http://www.fortismere.haringey.sch.uk">www.fortismere.haringey.sch.uk</a>
Contact:	Miss Noelia Gonzalez <a href="mailto:admissions@fortismere.org.uk">admissions@fortismere.org.uk</a>
DfE number:	309 4032
Gender:	Boys & Girls
Age range:	11-18
Published admission number:	270
Ofsted rating:	Outstanding
<b>Please check in advance on the school website before attending any open event.</b>	
For a full list of Haringey school open events, please click <a href="#">here</a>	



**OVERSUBSCRIPTION CRITERIA  
VISIT SCHOOL'S WEBSITE**

## Gladesmore Community School **COM**

Head teacher:	Goldwater Ojokor
School address:	Crowland Road, N15 6EB
School tel:	020 8800 0884
Email:	<a href="mailto:admin@gladesmore.com">admin@gladesmore.com</a>
Website:	<a href="http://www.gladesmore.com">www.gladesmore.com</a>
Contact:	Ms S Naidoo
DfE number:	309 4033
Gender:	Boys & Girls
Age range:	11-16
Published admission number:	243
Ofsted rating:	Outstanding
<b>Please check in advance on the school website before attending any open event.</b>	
For a full list of Haringey school open events, please click <a href="#">here</a>	

### Oversubscription criteria

The oversubscription criteria for this school is given in the

**Admissions Criteria**

for community schools.

Home

Applying  
for a school place

Haringey schools

Sixth Form

Additional  
information

Apply now  
eAdmissions



# Haringey Schools

## Greig City Academy **ACA**

Principal:	Paul Sutton OBE
School address:	High Street, Hornsey N8 7NU
School tel:	020 8609 0100
Email:	<a href="mailto:Vgateva@greigcityacademy.co.uk">Vgateva@greigcityacademy.co.uk</a>
Website:	<a href="http://www.greigcityacademy.co.uk/407/how-to-apply">www.greigcityacademy.co.uk/407/how-to-apply</a>
Contact:	Ms V Gateva
DfE number:	309 6905
Gender:	Boys & Girls
Age range:	11-18
Published admission number:	200
Ofsted rating:	Good

**Please check in advance on the school website before attending any open event.**

For a full list of Haringey school open events, please click [here](#)



**OVERSUBSCRIPTION CRITERIA  
VISIT SCHOOL'S WEBSITE**



Home

Applying  
for a school place

Haringey schools

Sixth Form

Additional  
information

**Apply now**  
eAdmissions

# Haringey Schools

## Harris Academy Tottenham **FREE**

Executive Principal:	Dr Lawrence Foley
Head of Academy:	Ms Kanika Forbes
School address:	Ashley Road, London N17 9LN
School tel:	020 3772 4243
Email:	<a href="mailto:admissions@harristottenham.org.uk">admissions@harristottenham.org.uk</a>
Website:	<a href="https://www.harristottenham.org.uk/">https://www.harristottenham.org.uk/</a>
Contact:	Ms Natasha Jackson-Hinds
DfE number:	309 4000
Gender:	Boys & Girls
Age range:	4-18
Published admission number:	150 external applications (180 places including children already attending the school in year 6).
Ofsted rating:	Outstanding
<b>Please check in advance on the school website before attending any open event.</b>	
For a full list of Haringey school open events, please click <a href="#">here</a>	

Children already attending Harris Academy Tottenham in year 6 are not required to make an application if they wish to continue attending the school in year 7.

If you would like to move your child to a different secondary school then you will need to submit an application online at [www.eadmissions.org.uk](http://www.eadmissions.org.uk)



**OVERSUBSCRIPTION CRITERIA  
VISIT SCHOOL'S WEBSITE**

Home

Applying  
for a school place

Haringey schools

Sixth Form

Additional  
information

Apply now  
eAdmissions

# Haringey Schools

## Heartlands High School **ACA**

Executive Head teacher:	Anthony Billings
Head of School:	Elen Roberts
School address:	Station Road, Wood Green, N22 7ST
School tel:	020 8826 1230
Email:	<a href="mailto:office@heartlands.haringey.sch.uk">office@heartlands.haringey.sch.uk</a>
Website address	<a href="http://www.heartlands.haringey.sch.uk">www.heartlands.haringey.sch.uk</a>
Contact:	Admissions Officer
DfE number:	309 4705
Gender:	Boys & Girls
Age range:	11-16
Published admission number:	240
Ofsted rating:	Good
<b>lease check in advance on the school website before attending any open event.</b>	
For a full list of Haringey school open events, please click <a href="#">here</a>	

## Highgate Wood School **COM**

Head teacher:	Patrick Cozier
School address:	Montenotte Road, N8 8RN
School tel:	020 8342 7970
Email:	<a href="mailto:admin@hws.haringey.sch.uk">admin@hws.haringey.sch.uk</a>
Website:	<a href="http://www.hws.haringey.sch.uk">www.hws.haringey.sch.uk</a>
Contact:	Ms Gemma King
DfE number:	309 4030
Gender:	Boys & Girls
Age range:	11-18
Published admission number:	243
Ofsted rating:	Good
<b>Please check in advance on the school website before attending any open event.</b>	
For a full list of Haringey school open events, please click <a href="#">here</a>	

### Oversubscription criteria

The oversubscription criteria for this school is given in the

**Admissions Criteria**

for community schools.



**OVERSUBSCRIPTION CRITERIA  
VISIT SCHOOL'S WEBSITE**

Home

Applying  
for a school place

Haringey schools

Sixth Form

Additional  
information

Apply now  
eAdmissions

# Haringey Schools

## Hornsey School for Girls **COM**

Head teacher:	Kuljit Rahelu
School address:	Inderwick Road, N8 9JF
School tel:	020 8348 6191
Email:	<a href="mailto:admin@hornseyschool.com">admin@hornseyschool.com</a>
Website:	<a href="http://www.hsg.haringey.sch.uk">www.hsg.haringey.sch.uk</a>
Contact:	<a href="mailto:execpa@hornseyschool.com">execpa@hornseyschool.com</a>
DfE number:	309 4029
Gender:	Girls
Age range:	11-16
Published admission number:	162
Ofsted rating:	Good

**Please check in advance on the school website before attending any open event.**

For a full list of Haringey school open events, please click [here](#)

### Oversubscription criteria

The oversubscription criteria for this school is given in the **Admissions Criteria** for community school.

## Park View **COM**

Head teacher:	Andrew Webster
School address:	West Green Road, N15 3QR
School tel:	020 8888 1722
Email:	<a href="mailto:admin@parkview.haringey.sch.uk">admin@parkview.haringey.sch.uk</a>
Website:	<a href="http://www.parkview.haringey.sch.uk">www.parkview.haringey.sch.uk</a>
Contact:	Ms S Christou
DfE number:	309 4037
Gender:	Boys & Girls
Age range:	11-16
Published admission number:	216
Ofsted rating:	Good

**Please check in advance on the school website before attending any open event.**

For a full list of Haringey school open events, please click [here](#)

### Oversubscription criteria

The oversubscription criteria for this school is given in the **Admissions Criteria** for community schools.

Home

Applying  
for a school place

Haringey schools

Sixth Form

Additional  
information

Apply now  
eAdmissions

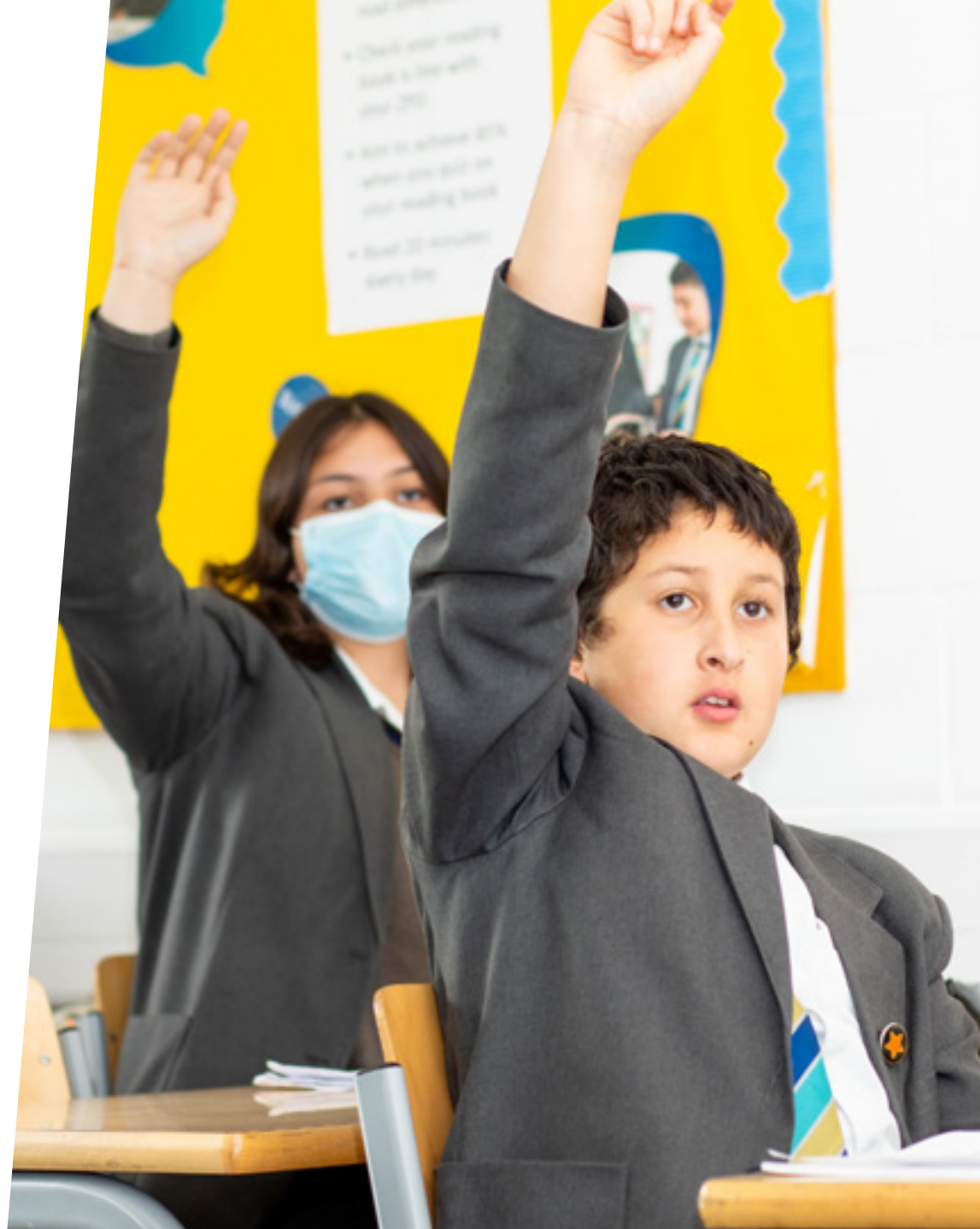
# Haringey Schools

## St Thomas More Catholic School ACA

Executive Head teacher:	Martin Tissot
Acting Head of School	Alex Rosen
School address:	Glendale Avenue, N22 5HN
School tel:	020 8888 7122
Email:	<a href="mailto:office@stthomasmoreschool.org.uk">office@stthomasmoreschool.org.uk</a>
Website:	<a href="http://www.stthomasmoreschool.org.uk">www.stthomasmoreschool.org.uk</a>
Contact:	Ms Eugenie Denchfield <a href="mailto:admissions@stthomasmoreschool.org.uk">admissions@stthomasmoreschool.org.uk</a>
DfE number:	309 4703
Gender:	Boys & Girls
Age range:	11-18
Published admission number:	192
Ofsted rating:	Outstanding
<b>Please check in advance on the school website before attending any open event.</b>	
For a full list of Haringey school open events, please click <a href="#">here</a>	



OVERSUBSCRIPTION CRITERIA  
VISIT SCHOOL'S WEBSITE



Home

Applying  
for a school place

Haringey schools

Sixth Form

Additional  
information

Apply now  
eAdmissions

# Haringey Schools

## Woodside School **ACA**

Head teacher	Angela Wallace
Deputy Head teachers:	Laura Sanford & Paul Bernard
School address:	White Hart Lane, N22 5QJ
School tel:	020 8889 6761
Email:	<a href="mailto:mail@woodsidehighschool.co.uk">mail@woodsidehighschool.co.uk</a>
Website:	<a href="http://www.woodsidehighschool.co.uk">www.woodsidehighschool.co.uk</a>
Contact:	Mrs Loulla Goulas <a href="mailto:admissions@woodsidehighschool.co.uk">admissions@woodsidehighschool.co.uk</a>
DfE number:	309 4034
Gender:	Boys & Girls
Age range:	11-16
Published admission number:	240
Ofsted rating:	Good

**Please check in advance on the school website before attending any open event.**

For a full list of Haringey school open events, please click [here](#)



**OVERSUBSCRIPTION CRITERIA  
VISIT SCHOOL'S WEBSITE**



**Home**

Applying  
for a school place

Haringey schools

Sixth Form

Additional  
information

**Apply now**  
eAdmissions

# Haringey 6th Form

## Ada, National College for Digital Skills

Head teacher:	Tina Götschi
Deputy Head teachers:	Vicky Clarke and Fatou Diallo
School address:	Broad Lane, London, N15 4AG
School tel:	020 3105 0125
Email:	<a href="mailto:sixthformadmissions@ada.ac.uk">sixthformadmissions@ada.ac.uk</a>
Contact:	Jon Mella <a href="mailto:sixthformadmissions@ada.ac.uk">sixthformadmissions@ada.ac.uk</a>
Admissions Criteria Link:	<a href="https://www.ada.ac.uk/sixthform/curriculum">https://www.ada.ac.uk/sixthform/curriculum</a>
DfE number:	143540
Published admission number:	240
Ofsted rating:	Good with Outstanding feature
Admissions Criteria Link:	<a href="https://www.ada.ac.uk/sixthform/curriculum">https://www.ada.ac.uk/sixthform/curriculum</a>
<b>Open Event:</b>	Please contact the College directly



ADMISSIONS CRITERIA  
VISIT SCHOOL'S WEBSITE

## Alexandra Park Sixth Form

Head teacher:	Michael McKenzie
School address:	Bidwell Gardens, London, N11 2AZ
School tel:	0208 826 4921
Email:	<a href="mailto:sixthform@alexandrapark.school">sixthform@alexandrapark.school</a>
Contact:	George Stratis
DfE number:	309/4036
Published admission number:	240
Ofsted rating:	Outstanding
<b>Open Event:</b>	Please contact the school directly



ADMISSIONS CRITERIA  
VISIT SCHOOL'S WEBSITE

Home

Applying  
for a school place

Haringey schools

Sixth Form

Additional  
information

Apply now  
eAdmissions

# Haringey 6th Form

## The College of Haringey, Enfield and North East London (CONEL)

Head teacher:	Kurt Hintz
School address:	Tottenham Centre: High Road N15 4RU, Enfield Centre: 73 Hertford Road EN3 5HA
School tel:	020 8442 3055
Email:	<a href="mailto:courseinfo@conel.ac.uk">courseinfo@conel.ac.uk</a>
<b>Open Event:</b>	Please contact the college directly



ADMISSIONS CRITERIA  
VISIT SCHOOL'S WEBSITE

## Fortismere Sixth Form

Co-head teacher:	Jo Davey & Zoe Judge
Deputy Head teachers:	Mrs Kirsten Sullivan and Mr Stuart Hess
School address:	Tetherdown, London N10 1NE
School tel:	020 8365 4400
Email:	<a href="mailto:sixthform@fortismere.org.uk">sixthform@fortismere.org.uk</a>
Contact:	<a href="mailto:rknight@fortismere.org.uk">rknight@fortismere.org.uk</a>
DfE number:	309/4032
Ofsted rating:	Outstanding
<b>Open Event:</b>	Please contact the school directly



ADMISSIONS CRITERIA  
VISIT SCHOOL'S WEBSITE

Home

Applying  
for a school place

Haringey schools

Sixth Form

Additional  
information

Apply now  
eAdmissions



# Haringey 6th Form

## Greig City Academy Sixth Form

Head teacher:	Paul Sutton OBE
School address:	High Street, Hornsey, N8 7NU
School tel:	020 8609 0100
Email:	<a href="mailto:jholt@greigcityacademy.co.uk">jholt@greigcityacademy.co.uk</a>
Contact:	Jon Holt, Head of Sixth Form
DfE number:	309 6905
Ofsted rating:	Good
<b>Open Evening:</b> Please contact the school directly	



ADMISSIONS CRITERIA  
VISIT SCHOOL'S WEBSITE

## Harris Academy Tottenham Sixth Form

Head teacher:	Nick Soar
Head of academy:	Lawrence Foley
School address:	Ashley Road, Tottenham. N17 9LN
School tel:	0203 772 4243
Email:	<a href="mailto:sixthform@harristottenham.org.uk">sixthform@harristottenham.org.uk</a>
Contact:	Megan Greet: <a href="mailto:m.greet@harristottenham.org.uk">m.greet@harristottenham.org.uk</a>
DfE number:	140935
Ofsted rating:	Outstanding
<b>Open Event:</b> Please contact the school directly	



ADMISSIONS CRITERIA  
VISIT SCHOOL'S WEBSITE

Home

Applying  
for a school place

Haringey schools

Sixth Form

Additional  
information

Apply now  
eAdmissions

# Haringey 6th Form

## Haringey Sixth Form College

Head teacher:	Lisa Westray
School address:	White Hart Lane, London, N17 8HR
School tel:	020 8376 6000
Email:	<a href="mailto:apply@haringey6.ac.uk">apply@haringey6.ac.uk</a>
Website:	<a href="https://www.haringey6.ac.uk/88/apply-now">https://www.haringey6.ac.uk/88/apply-now</a>
Contact:	Marcella Kirby <a href="mailto:marcella.kirby@haringey6.ac.uk">marcella.kirby@haringey6.ac.uk</a>
DfE number:	309/4704
Ofsted rating:	Good
<b>Open Event:</b>	
Please contact the College directly	



ADMISSIONS CRITERIA  
VISIT SCHOOL'S WEBSITE

## Highgate Wood Sixth Form

Head teacher:	Patrick Cozier
School address:	Montenotte Road, London N8 8RN
School tel:	020 8342 7970
Email:	<a href="mailto:post16@hws.haringey.sch.uk">post16@hws.haringey.sch.uk</a>
Contact:	Lindsay Pinnick
DfE number:	3094030
Ofsted rating:	Good and Improving
<b>Open Event:</b>	
Please contact the school directly.	



ADMISSIONS CRITERIA  
VISIT SCHOOL'S WEBSITE

Home

Applying  
for a school place

Haringey schools

Sixth Form

Additional  
information

Apply now  
eAdmissions

# Haringey 6th Form

## London Academy of Excellence Tottenham

Head teacher:	Jan Balon
School address:	Lilywhite House, 780 High Road, London, N17 0BX
School tel:	020 8352 6020
Email:	<a href="mailto:admissions@laetottenham.ac.uk">admissions@laetottenham.ac.uk</a>
Website:	<a href="https://www.laetottenham.ac.uk/attachments/download.asp?file=247&amp;type=pdf">https://www.laetottenham.ac.uk/attachments/download.asp?file=247&amp;type=pdf</a>
Contact:	Jessica Amo <a href="mailto:jessica.amo@laetottenham.ac.uk">jessica.amo@laetottenham.ac.uk</a>
DfE number:	309/4002
Ofsted rating:	Outstanding
<b>Open Event:</b>	
Please contact the Academy directly	



ADMISSIONS CRITERIA  
VISIT SCHOOL'S WEBSITE



Home

Applying  
for a school place

Haringey schools

Sixth Form

Additional  
information

Apply now  
eAdmissions

# Haringey 6th Form

## St Thomas More Catholic Sixth Form

Executive Headteacher:	Martin Tissot
Acting Head of School:	Alex Rosen
School address:	Glendale Avenue, N22 5HN
School tel:	020 8888 7122
Email:	<a href="mailto:office@stthomasmoreschool.org.uk">office@stthomasmoreschool.org.uk</a>
Contact:	Dean Saunders – Head of Sixth Form
DfE number:	309 4703
Ofsted rating:	Outstanding
<b>Please check in advance on the school website before attending any open event.</b>	
<b>Open Event:</b>	
Please contact the school directly	



ADMISSIONS CRITERIA  
VISIT SCHOOL'S WEBSITE

Home

Applying  
for a school place

Haringey schools

Sixth Form

Additional  
information

Apply now  
eAdmissions

# Additional information

**In-year admissions**

---

**14-19 Schools  
(UTCs and Studio Schools)**

---

**Education Welfare Service**

---

**Free School Meals**

---

**Independent schools**

---

**Local Government Ombudsman**

---

**Ofsted**

---

**Private fostering**

---

**Schools in other authorities**

---

**Useful contact details**

---



**Home**

Applying  
for a school place

Haringey schools

Sixth Form

Additional  
information

**Apply now**  
eAdmissions

# Additional information

## In-Year Admissions

### Admissions to schools at other times

Applications for a school place at any other time than transferring to secondary schools are called 'In-year' admissions. To apply for a Haringey school, please complete [our online in-year e-form](#). Supplementary Information Forms (SIFs), required by some schools, will be available directly from the schools. These schools will use the information on the SIFs to apply their admissions criteria. See [Admissions Criteria](#) for Haringey community schools

If you would like to apply for a school outside Haringey, please contact the borough the school is located in for details on how to apply. Please note, this is different from the process for applying to start secondary school.

### Waiting lists

If the school you are interested in has a vacancy in your child's year group we will be able to offer a place. If there are no places, your child's name can be added to the waiting list. If a place becomes available at a school, all the children on the waiting list are considered and the place is offered in accordance with the school's admissions criteria. Waiting lists for community schools will be held in the order of the admissions criteria.

### School admission appeals

If your child is not offered a place at one of the schools you listed on your form you can appeal against this decision to an independent appeal panel. See [School Admissions Appeals](#). Please note for applications for in year admissions there is no appeal deadline. Appeals will be heard within 30 school days of the appeal being lodged.



[Home](#)

[Applying  
for a school place](#)

[Haringey schools](#)

[Sixth Form](#)

[Additional  
information](#)

[Apply now  
eAdmissions](#)

# Additional information

## Requests to transfer between schools

If you have moved into the local area, your child can join a school in the appropriate year group for their age. Moving your child from one primary or secondary school to another (also known as an in-year move) is a big decision for you and for your child. If you're not moving address and would like to change your child's school, you should consider the following before you make your decision:

1. Why are you moving your child and can you resolve any concerns you have with the school or with your child without changing school?
2. How will your child cope with learning new rules and having to do things differently, or possibly having missed important work? Children who transfer schools after their exam subjects have been chosen in Year 9 may find that they can't do the same subjects, or that the exam board and courses are different.
3. If your child has brothers or sisters at the same school, transferring one child may affect his or her sibling(s).
4. Will it be difficult for you to have children attending different schools, for example with drop off at the beginning of the day or pick up in the afternoon, or because the schools have different term dates?

You also need to bear in mind that most schools in Haringey are full and we may not be able to offer you the school that you want straight away or indeed at all.

To make sure that you are taking the decision in the best interests of your child we recommend that you sit down with your child and ask them whether or not they want to move to another school. If they tell you that they are being bullied or not

getting on with other pupils, you should speak to your child's Form Tutor or Head of Year first, to resolve any problems your child may be having.

If you've done this and still have concerns, or are unhappy about the way the school is dealing with your concerns, you should make an appointment to speak to the Head teacher of the school.

Please remember, a decision to move a child from one school to another should not be taken without careful consideration.

## Harris Federation

If you are interested in applying for a place at Harris Academy Tottenham, an application will be available from both the school and the Haringey Admissions Service. If you are applying for more than one school, we recommend that you complete the Haringey in-year application so that your child can be considered for other schools. You are still able to list Harris Academy Tottenham on your Haringey in-year application but you will also be asked to contact the school directly.

## Fair access

We have a protocol in place which ensures that vulnerable young people who apply for a place outside the normal round of admissions, and who are not on the roll of a school, are offered a place quickly. Fair Access admissions are shared fairly across all schools and Academies. Further information is available on our website: [www.haringey.gov.uk/schooladmissions](http://www.haringey.gov.uk/schooladmissions)

# Additional information

## 14-19 Schools (UTCs and Studio Schools)

14-19 Schools - such as University Technical Colleges (UTCs) and Studio Schools - are state schools which admit children in year 10. They are a new educational concept offering different approaches to the curriculum.

The application process for these schools starts while your child is in year 9 and the closing date for most applications is 31 October 2022, however you should check with each school what their individual admission arrangements are.

A list of all of these schools in and around London can be found here on the [Haringey website](#).

### What are University Technical Colleges (UTCs)?

University Technical Colleges (UTCs) are set up by universities and business and specialise in one or two technical subjects. In years 10 and 11 they offer a similar GCSE curriculum to a typical secondary school, including English and Maths, as well as their specialist subject.

You can find out more at [www.utcolleges.org/utcs](http://www.utcolleges.org/utcs)

### What are Studio Schools?

Studio Schools are similar to UTCs in that they have employer involvement in the curriculum and focus on developing skills needed for employment, involving personal coaching and work experience. They have a similar curriculum to a typical secondary school.



Home

Applying  
for a school place

Haringey schools

Sixth Form

Additional  
information

Apply now  
eAdmissions



# Additional information

## Useful Contact Details

### Haringey Customer Service Centres

020 8489 1000

#### Wood Green Customer Service Centre

187-197A High Road  
Wood Green N22 6XD

Opening times:

Monday, Wednesday and Friday 10am-4pm

Tuesday and Thursday 10am-5pm

For an appointment at Wood Green [click here](#)

Wood Green Library - We no longer print paper permits! We cannot deal with PCNs or Appeals (office365.com)

Or Phone: 0208 489 2280

#### South Tottenham Customer Service Centre

Marcus Garvey Centre -  
Library and Customer Services Tottenham Green Pools and Fitness  
1 Philip Lane Tottenham N15 4JA

Opening Times:

Monday, Wednesday and Friday 10am-4pm

Tuesday and Thursday 10am-5pm

For an appointment at Marcus Garvey [click here](#)

Marcus Garvey - We no longer print paper permits! We cannot deal with PCNs or Appeals! (office365.com)

### ACE Advice and Information Service

A voluntary organisation which offers advice and information on education issues.

Tel: 0300 0115 142 (Mon-Wed 10am-1pm term time only)

Website: [www.ace-ed.org.uk](http://www.ace-ed.org.uk) **Children's Centres**

Haringey's Children's Centres offer access to the following services: early education integrated with childcare; family support and outreach to parents and child and family health services. Information about these is available at

[www.haringey.gov.uk/childrenscentres](http://www.haringey.gov.uk/childrenscentres)

### Department for Education (DfE)

The government department responsible for schools and education.

Tel: 0370 000 2288

Website: [www.education.gov.uk](http://www.education.gov.uk)

Home

Applying  
for a school place

Haringey schools

Sixth Form

Additional  
information

Apply now  
eAdmissions

# Additional information

## Education Welfare Service

The Education Welfare Service works with schools, pupils and families to encourage good school attendance and high standards of pupil welfare. There is a very clear link between good school attendance and good academic achievement. There are also clear links between poor school attendance and risk of being involved in antisocial behaviour, crime and poor life outcomes generally.

The Education Welfare Officer (EWO) will work with young people who find regular school attendance problematic. This may mean directly working with young people themselves or referral to other agencies (with parental agreement). They will ensure that parents / carers are fully aware of their responsibilities to ensure regular school attendance. They can give advice on a range of issues such as matters relating to child protection and bullying.

However, where such work has failed to improve school attendance, the school based EWO will refer cases to the central Education Welfare Service which may use its full range of statutory powers, including legal action where there is no good reason for absence from school.

Tel: 020 8489 1000

Website: [www.haringey.gov.uk/ews](http://www.haringey.gov.uk/ews)

## Free school meals and clothing grants

If your child attends a Haringey school and you are in receipt of one of the following benefits or NASS support, you are eligible to apply for free school meals for your children:

- Income Support
- Income Based Job Seekers Allowance
- Income Related Employment and Support Allowances ESA(IR)
- Child Tax Credit providing you are not entitled to Working Tax Credit and your annual income as assessed by Revenues and Customs is below £16,190
- Guaranteed Element of State Pension Credit
- Or if you are supported by NASS and supported under Part VI of the Immigration and Asylum Act 1999. You must provide your NASS reference number.

We will also need to see the child benefit letter or the children's long birth certificate. You must renew the entitlement every 12 months.

Please contact your child's school or ring customer services on 020 8489 1000 to get an application form.

Website: [www.haringey.gov.uk/freeschoolmeals](http://www.haringey.gov.uk/freeschoolmeals)

# Additional information

## Independent (private fee paying) schools

Now called the Independent Schools Council Information and Advice Service (ISCias) this provides information and advice for parents interested in an independent school education for their children.

Tel: 0845 724 6657

email: [information@isc.co.uk](mailto:information@isc.co.uk)

Website: [www.isc.co.uk](http://www.isc.co.uk)

## Local Government Ombudsman (LGO)

The Local Government Ombudsman looks at complaints about councils and some other authorities, including education admissions appeal panels. Their job is to investigate complaints in a fair and independent way - they do not take sides. If you have a problem with a council service, you should first complain to the council, but if you are still not satisfied, they may be able to help.

Tel: The LGO Advice Team: 0300 061 0614

Website: [www.lgo.org.uk](http://www.lgo.org.uk)

## Ofsted

Ofsted inspect and report on standards of schools and childminders. Reports can be viewed online at [www.ofsted.gov.uk](http://www.ofsted.gov.uk)

Email: [enquiries@ofsted.gov.uk](mailto:enquiries@ofsted.gov.uk)

## Data Protection Act

Haringey Council will handle the information you have provided in line with the provisions of the Data Protection Act. Any personal information will be held in confidence with only the necessary people able to see or use it. Under the Data Protection Act you have the right to make a formal request in writing for access to personal data held about you or your child.

Haringey has a duty under the Children's Act 2004 to work with partners to provide and improve services to children and young people in the area. Therefore Haringey may also use this information for other legitimate purposes and may share this information where necessary with other bodies responsible for administering services to children and young people. Haringey also has a duty to protect the public funds it administers, and to this end it may use the information you have provided on this form for the prevention and detection of fraud

# Additional information

## Private fostering

**If a child is living with someone outside their family, this is what is known as a private fostering arrangement.**

### ■ Do you know what private fostering is?

Private fostering is when a child under the age of 16 (or 18 if disabled) is cared for by someone who is not their parent or a 'close relative'. This is a private arrangement made between a parent and a carer, for 28 days or more. Close relatives are defined as step-parents, grandparents, brothers, sisters, uncles or aunts (whether of full blood, half blood or marriage/affinity). It is a legal requirement that you contact Haringey Council on 020 8489 4470 or email [mashreferral@haringey.gov.uk](mailto:mashreferral@haringey.gov.uk)

### ■ Do you know about the duty to notify?

There is a duty on the part of parents and carers entering into private fostering arrangements to notify the council. This is in order to safeguard and protect the child's welfare as well as ensuring that the child, carer and parent are receiving appropriate support and help.

If you know or suspect that a child is being cared for by someone outside their family please call us on 020 8489 4470 or email [mashreferral@haringey.gov.uk](mailto:mashreferral@haringey.gov.uk)



# Additional information

## Schools in other authorities

### Barnet

Barnet Education & Learning Service (BELS)  
3rd Floor, 2 Bristol Avenue Colindale London NW9  
4EW

**Telephone:**

020 8359 7651

**Website:**

[www.barnet.gov.uk/schooladmissions](http://www.barnet.gov.uk/schooladmissions)

### Camden

School Admissions  
Town Hall  
Judd Street  
WC1H 9JE

**Telephone:**

020 7974 1625

**Email:**

[admissions@camden.gov.uk](mailto:admissions@camden.gov.uk)

**Website:**

[www.camden.gov.uk/admissions](http://www.camden.gov.uk/admissions)

### Enfield

Enfield Schools Admission Service,  
Civic Centre, Silver Street,  
Enfield EN1 3XQ

**Telephone:**

020 8379 5501

**Email:**

[esas@enfield.gov.uk](mailto:esas@enfield.gov.uk)

**Website:**

[www.enfield.gov.uk/admissions](http://www.enfield.gov.uk/admissions)

### Hackney

Hackney Education  
1 Reading Lane,  
London E8 1GQ

**Telephone:**

020 8820 7000 (option 3)

**Email:**

[secondary.transfer@hackney.gov.uk](mailto:secondary.transfer@hackney.gov.uk)

**Website:**

[www.education.hackney.gov.uk](http://www.education.hackney.gov.uk)

### Islington

School Admissions Team,  
222 Upper Street, London N1 1XR

**Telephone:**

020 7527 5515

**Email:**

[admissions@islington.gov.uk](mailto:admissions@islington.gov.uk)

**Website:**

[www.islington.gov.uk/admissions](http://www.islington.gov.uk/admissions)

### Waltham Forest

School Admissions Service,  
The Fellowship Square  
Forest Road, London E17 4JF

**Telephone:**

020 8496 3000

**Email:**

[admissions@walthamforest.gov.uk](mailto:admissions@walthamforest.gov.uk)

**Website:**

[www.walthamforest.gov.uk](http://www.walthamforest.gov.uk)

# Haringey libraries

Telephone Number: 0208 489 4560

Free internet access available at all libraries

Please visit Haringey libraries [www.haringey.gov.uk/libraries](http://www.haringey.gov.uk/libraries)  
for opening times and more information about libraries.

## Alexandra Park Library

*Potentially closed for refurbishments. Please check website for updates.*

Alexandra Park Road  
N22 7UJ

## Coombes Croft Library

Tottenham High Road  
N17 8AG

## Highgate Library

*Potentially closed for refurbishments. Please check website for updates.*

1 Shepherd's Hill  
N6 5QJ

## Hornsey Library

Haringey Park  
N8 9JA  
Opening hours:  
Mon, Tues, Thur, Fri: 9-7  
Wed: 10-7

## Marcus Garvey Centre Library and Customer Services

1 Philip Lane  
N15 4JA

## Muswell Hill Library

Queens Avenue  
N10 3PE

## St Ann's Library

Cissbury Road  
N15 5PU

## Stroud Green and Harringay Library

Quernmore Road  
N4 4QR

## Wood Green Library and Customer Services

187-197A High Road,  
Wood Green, N22 6XD

Home

Applying  
for a school place

Haringey schools

Sixth Form

Additional  
information

Apply now  
eAdmissions



Credit Union  
the savings & loans co-operative

# Why not save with a 'Young Saver' account?

The Credit Union is encouraging all children to learn the importance of saving and to learn the skills of budgeting. You can save for your children (or yourself) with regular savings payments through your salary or through your bank, and withdraw your money whenever you need it.

To find out more about our ethical 'Young Savers' accounts:

Open an account online: [www.credit-union.coop](http://www.credit-union.coop)

Email us: [info@credit-union.coop](mailto:info@credit-union.coop)

Phone us: 020 7561 1786

London Capital Credit Union Ltd  
Reg. Office: Jeremy Hopgood Rooms, Caxton House,  
129 St John's Way, Archway, London, N19 3RQ

Authorised by the Prudential Regulation Authority and regulated by the Financial Conduct Authority and the Prudential Regulation Authority.  
Firm No. 214094 | Reg. No. 513c

**Save for your children...**



Home

Applying  
for a school place

Haringey schools

Sixth Form

Additional  
information

**Apply now**  
eAdmissions



## Contact details



020 8489 1000



schooladmissions@haringey.gov.uk



5th Floor, 48 Station Road  
Wood Green  
N22 7TY

**Staff are working remotely.  
Please send all correspondence by email.**

### Albanian

Ky është Prospekti i Shkolës Sekondare (Të Mesme) Haringej që ju jep informata si të transferoni fëmijën tuaj nga shkolla primare në atë sekondare. Nëse doni që një përkthyes t'ju sqarojë këto informata, ju lutem plotësoni këtë formular dhe kthejeni tek adresa e mëposhtme me postim falas.

### Kurdish

Ev Prospektûsa Xwendegêha Navîn ya Haringey li ser derbastûna zarokê we ji xwendegêha destpêkê bo xwendegêha navîn agahiyê dide we. Heke hun dixwazin ku werpêrek bi we re di ser vê agahiyê re here, ji kerema xwe vê formê tje bikin û wê ji navnîşana posta bêpere ya jêrîn re bişînin.

### Arabic

يقدم لكم كراس "المدراس الثانوية في هارينجيه" معلومات عن طريقة انتقال طفلكم من المدرسة الابتدائية الى الثانوية. إذا كنتم في حاجة الى مترجم لقراءة المعلومات لكم، الرجاء ملء هذه الاستمارة وارجاعها الى العنوان البريدي أدناه الذي لا يتطلب طابعاً بريدياً.

### Polish

Oto informator zawierający dane dotyczące szkół średnich w Haringey informujący o tym, jak przenieść dziecko ze szkoły podstawowej do średniej. Jeśli chciałbyś zapoznać się z treścią informatora z pomocą tłumacza, wypełnij załączony formularz i prześlij go na podany poniżej bezpłatny adres.

### Bengali

এই হল হারিংয়ে সেকেন্ডারী স্কুল প্রসপেক্টাস, যাকে মাধ্যমিকী স্কুল প্রসপেক্টাসী বুলে খাওয়া হবে। এটি হল প্রথম স্কুল থেকে সেকেন্ডারী স্কুলে যেতে যাওয়ার জন্য একটি ফর্ম। এখানে প্রসপেক্টাসীতে দেওয়া তথ্যের উপর ভিত্তি করে এই ফর্ম পূরণ করা হবে। এটি পূরণ করে এটি স্কুল অফিসে বা নিজ হারিংয়ে সেকেন্ডারী স্কুলে ফেরত পাঠাতে হবে।

### Portuguese

Esse é o Prospecto para Escolas Secundárias de Haringey, te fornecendo informação sobre como transferir sua criança da escola primária para a escola secundária. Se você gostaria que um intérprete examinasse a informação com você, por favor complete esse formulário e retorne-o para o endereço postal gratuito abaixo.

### French

Voici le Prospectus des Écoles Secondaires de Haringey, qui vous fournit des informations sur comment transférer votre enfant de l'école primaire à secondaire. Si vous souhaitez qu'un interprète vous explique ces informations, veuillez compléter ce formulaire et le renvoyer à l'adresse au port payé ci-dessous.

### Somali

Kani waa qoraalkii dugsiyada sare ee Haringey, wuxuu ku sinayaa macluumaadka ku saabsan siduu imahaagu ugu kula gudbi lahaa dugsiiga hoose ilaa dugsiiga sare. Haddii aad rabto turjubaan kuu shaqa macluumaadkan, fadlan buuxi foomkan oo ku soo celi cinwaanka boostiisu lacag la'aanta tahay ee hoose

### Greek

Αυτό είναι το καταστατικό φυλλάδιο των σχολικών δευτεροβάθμιας εκπαίδευσης του Haringey. Παρέχει πληροφορίες για τον τρόπο μεταφοράς του παιδιού σας από το δημοτικό σχολείο σε σχολείο δευτεροβάθμιας εκπαίδευσης. Αν θέλετε να διαβάσετε τις πληροφορίες αυτές με τη βοήθεια διαμεγνέτη, παρακαλούμε συμπληρώστε αυτό τη φόρμα και επιστρέψτε την στην πιο κάτω διεύθυνση χωρίς πληρωτέο.

### Turkish

Bu Haringey Orta Okul Broşürü olup çocuğunuzun ilköğülden ortaokula nasıl transfer edeceğinizi konusunda bilgiler içermektedir. Bir çevirmenin bilgileri size okumasını istiyorsanız lütfen bu formu doldurup aşağıdaki ücretsiz posta (Freepost) adresine yollayın.

This is the Haringey Secondary Prospectus, providing you with the information on how to transfer your child from primary to secondary school. If you would like an interpreter to go through the information with you, please complete this form and return to the freepost address below.

- In large print
- On audio tape
- In Braille
- In another language, please state: \_\_\_\_\_



Name: \_\_\_\_\_ Tel: \_\_\_\_\_  
 Address: \_\_\_\_\_  
 \_\_\_\_\_ Email: \_\_\_\_\_

Please return to: schooladmissions@haringey.gov.uk or post to: Haringey School Admissions, 48 Station Road, Wood Green, London N22 7TY